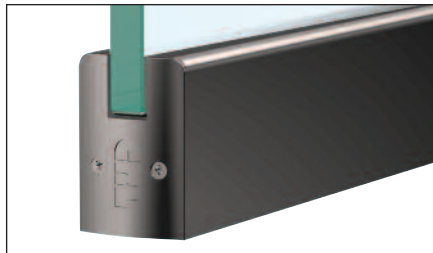


CRL Low Profile Door Rails

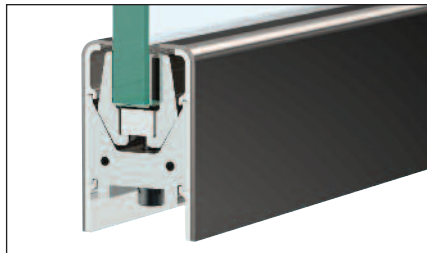
- Low Profile Rails Are Only 2-5/16" (59 mm) Tall
- Patented Wedge-Lock™ Glass Securing System
- For 1/2" (12 mm) Tempered Glass
- Adjust and Align Doors Without Removal
- Available in Six Standard Architectural Finishes, With Custom Finishes Available
- Ready-to-Ship From CRL Inventory
- Matching Sidelite Rails (See Page 143H)
- Also Available in Patch Door Rails (See Page 124H)



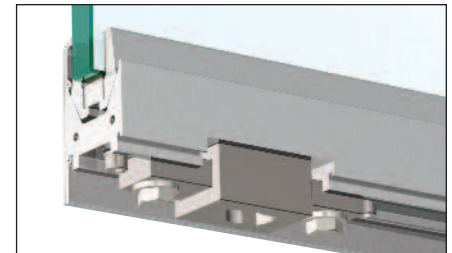
U.S. Patents 6,434,905 and 6,912,818 B2
Foreign Patents Pending.



End Caps are Included With All Low Profile Door Rails



Utilizes CRL's Patented Wedge-Lock™ Glass Securing System



All Low Profile Door Rails are Prepped to Receive Any of CRL's Low Profile Door Rail Inserts (Sold Separately, See Next Page)

Adjusting the Reveal Between the Door and Fixed Panel or Jamb

With our Low Profile Door Rails, installers have the ability to quickly and easily adjust the lateral alignment of the door to the side fixed panel or jamb. **NOTE:** This adjustment must be done prior to installing lock cylinders/thumbturns.

- Step 1:** Open the door. Using a #1 Phillips screwdriver, remove the door's pivot edge End Cap and slide the Door Rail's side panel until removed from the door (see Figure 1).
- Step 2:** Place a vacuum cup on the handle edge of the door and position support blocks under the door assembly to prevent the door from dropping during adjustment.
- Step 3:** Starting with either the top or bottom Door Rail, depending on which end is farthest from alignment, use a 7/16" Open-End Wrench to loosen the two 1/4" hex head bolts that secure the mounting hardware (see Figure 2).
- Step 4:** Lift or lower the handle edge of the door to improve the reveal, and adjust blocking to hold the new position.
- Step 5:** Tighten the two 1/4" hex head bolts that secure the mounting hardware, and if necessary, repeat steps 2 through 4 on the remaining Door Rail.
- Step 6:** With the door in the open position, slide the Door Rail's side panels into position, covering the clamping section of both Door Rails. Re-install the End Caps (see Figure 3).



Figure 1



Figure 2



Figure 3