

CRL Center-Hung Floor Mounted Bottom Pivots

CRL Adjustable Dual-Purpose Bottom Pivot Set

- Dual-Purpose Pivot Mounts Directly to Floor or Threshold
- For Use With Both End-Load and Side-Load Arms

This Adjustable Dual-Purpose Bottom Pivot Set is for use with 1" (25 mm) deep bottom door rail applications, and is the standard Bottom Pivot Set supplied with our "S" and "A" Type Door Closer packages. It can be used with the base plate for floor mounting or attached directly to the threshold. A 3/16" (5 mm) height adjustment is possible with the door on or off the pivot. This Pivot is suitable for either end-load or side-load center-hung applications. Maximum weight capacity is 200 pounds (90.7 kg). Minimum order is one each.



CAT. NO. CRL8010DP

CRL Heavy-Duty Adjustable Dual-Purpose Bottom Pivot Set

- Dual-Purpose Pivot Mounts Directly to Floor or Threshold
- For Use With Both End-Load and Side-Load Arms

This Heavy-Duty Adjustable Dual-Purpose Pivot Set is for use with 1" (25 mm) deep bottom door rail applications, and can be used in place of the standard Bottom Pivot Set. The solid steel base plate has additional mounting holes to support heavier doors with higher traffic. A 3/16" (5 mm) height adjustment is possible with the door on or off of the pivot. This Pivot is suitable for either end-load or side-load center-hung applications. Maximum weight capacity is 200 pounds (90.7 kg). Minimum order is one each.

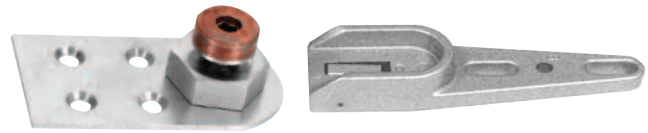


CAT. NO. CRL8010HDP

CRL Door-On Adjustable Bottom Pivot Set

- Bottom Clearance Adjustable From 1/4" to 1/2" (6 to 12 mm)
- For Use With End-Load Arm Applications

This Door-On Adjustable Bottom Pivot Set is intended for use with end-load applications, and can be used with bottom door rails with a minimum of 1" (25 mm) depth. This Pivot allows the door clearance to be adjusted from 1/4" to 1/2" (6 to 12 mm) with the door installed. Maximum weight capacity is 200 pounds (90.7 kg). Minimum order is one each.

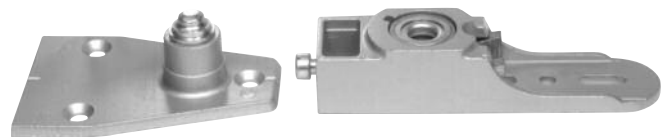


CAT. NO. CRL8010ADJ

CRL Adjustable Side-Load Floor Mount Bottom Pivot Set

- "G" Type for Use With Side-Load Arms
- 3/16" (5 mm) Height Adjustment

This Adjustable Bottom Pivot Set is for use with 1-1/2" (38 mm) deep bottom door rail applications. It mounts directly to the floor, and is intended for use with side-load applications. A 3/16" (5 mm) height adjustment is possible with the door installed, and requires an adjustment hole in the end of the door. Maximum weight capacity is 150 pounds (68 kg). Minimum order is one each.



CAT. NO. CRL8010G

CRL Adjustable Side-Load Threshold Mount Bottom Pivot Set

- "GE" Type for Use With Side-Load Arms
- 3/16" (5 mm) Height Adjustment

This Adjustable Bottom Pivot Set is for use with 1-1/2" (38 mm) deep bottom door rail applications. It mounts to the threshold and is intended for use with side-load applications. A 3/16" (5 mm) height adjustment is possible with the door installed, and requires an adjustment hole in the end of the door. Maximum weight capacity is 150 pounds (68 kg). Minimum order is one each.



CAT. NO. CRL8010GE